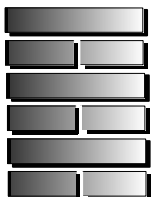


This document was created on March 30, 2006

Heat-Kit System
Modular Contraflow Masonry Heater Core
Assembly Manual

Custom side bench for J-loop (top-exit) heater

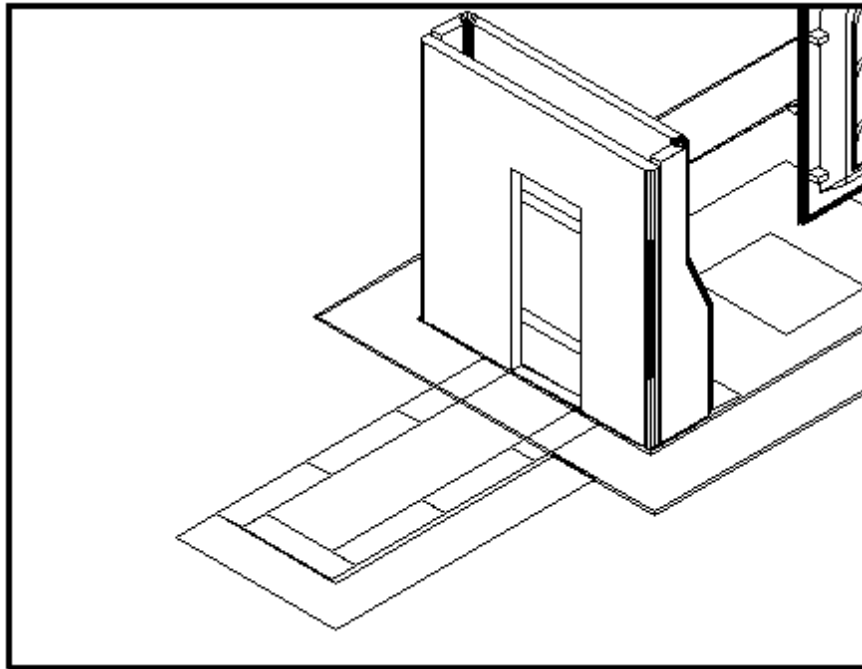
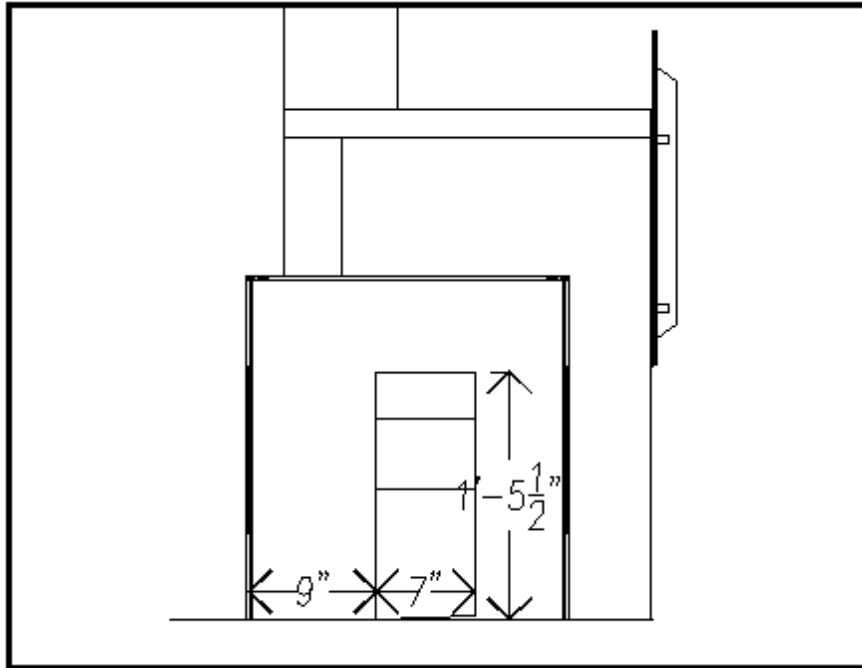
DRAFT

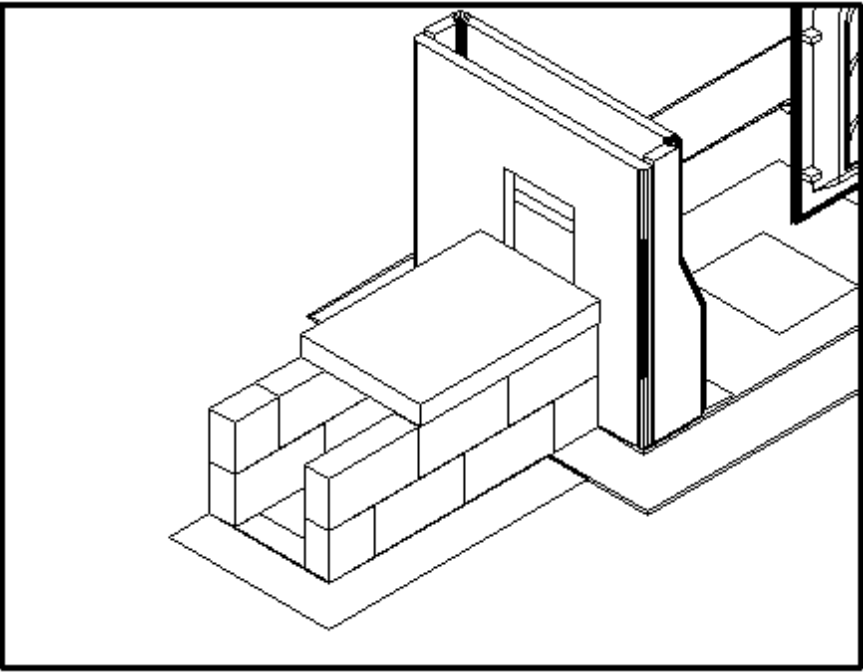
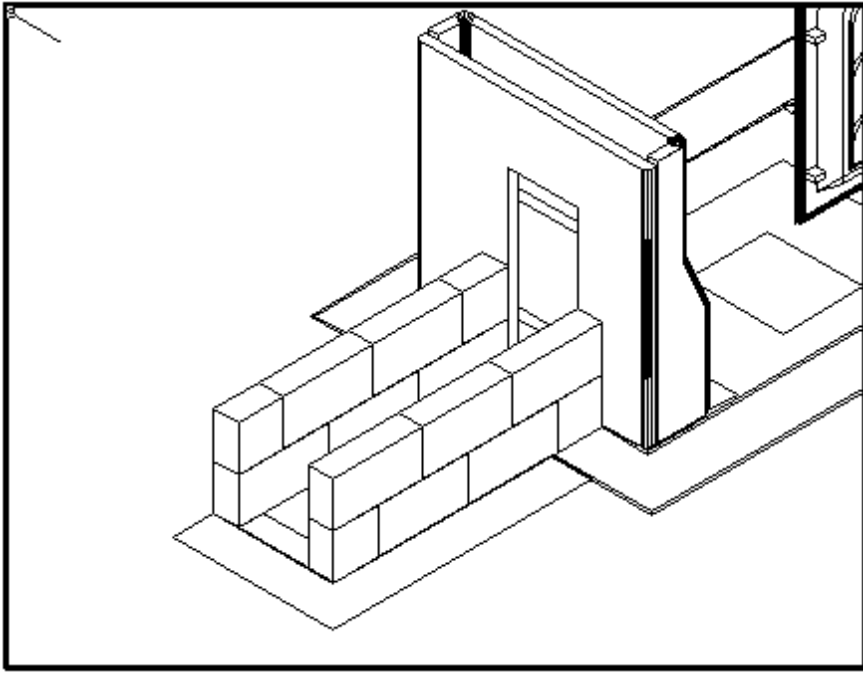


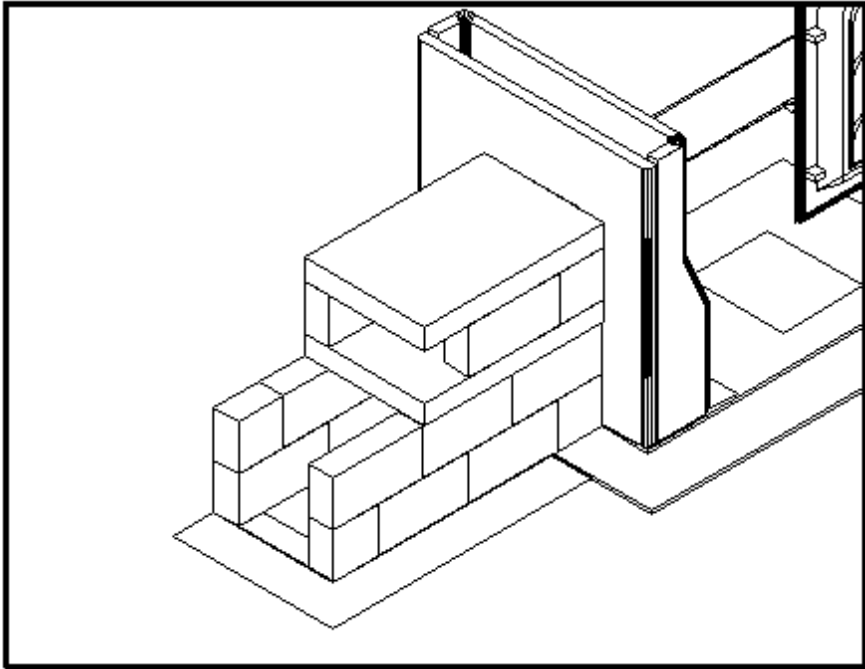
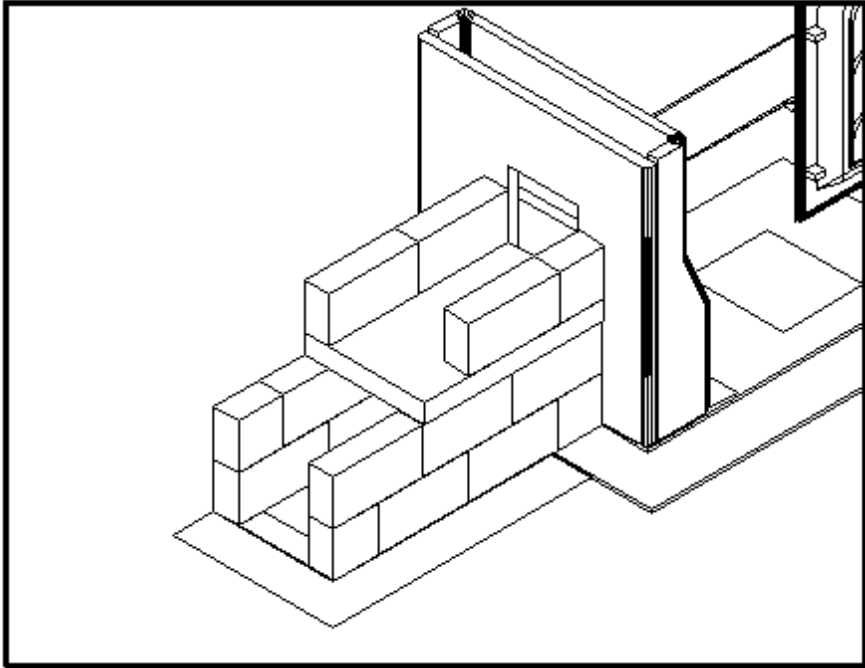
Masonry Stove
Builders

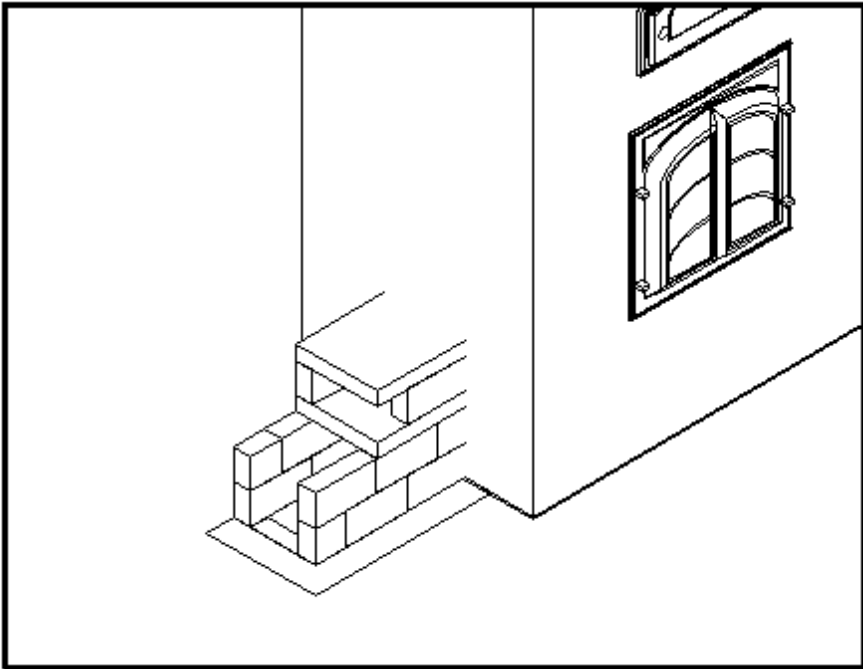
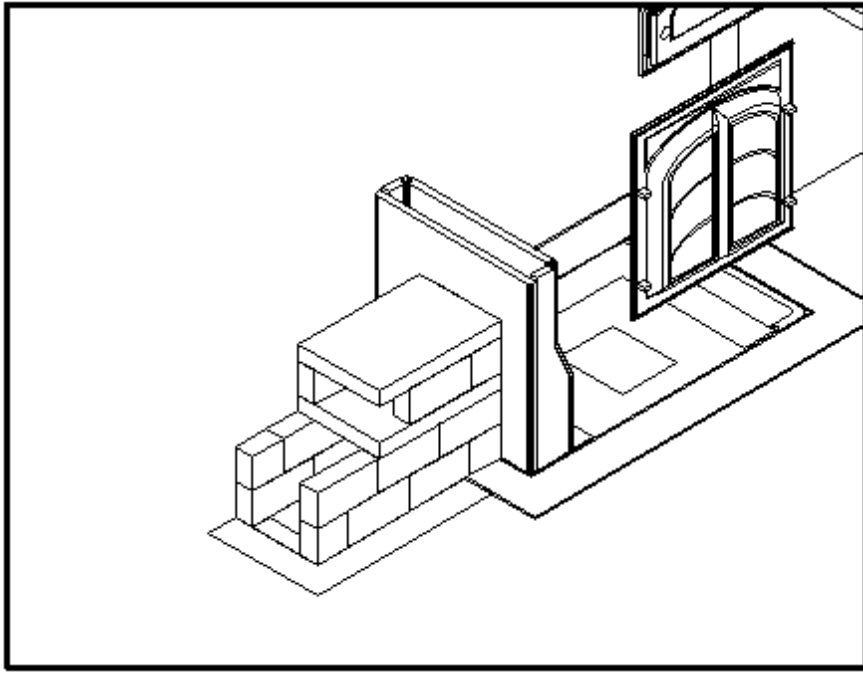
RR 5, Shawville, Québec J0X 2Y0

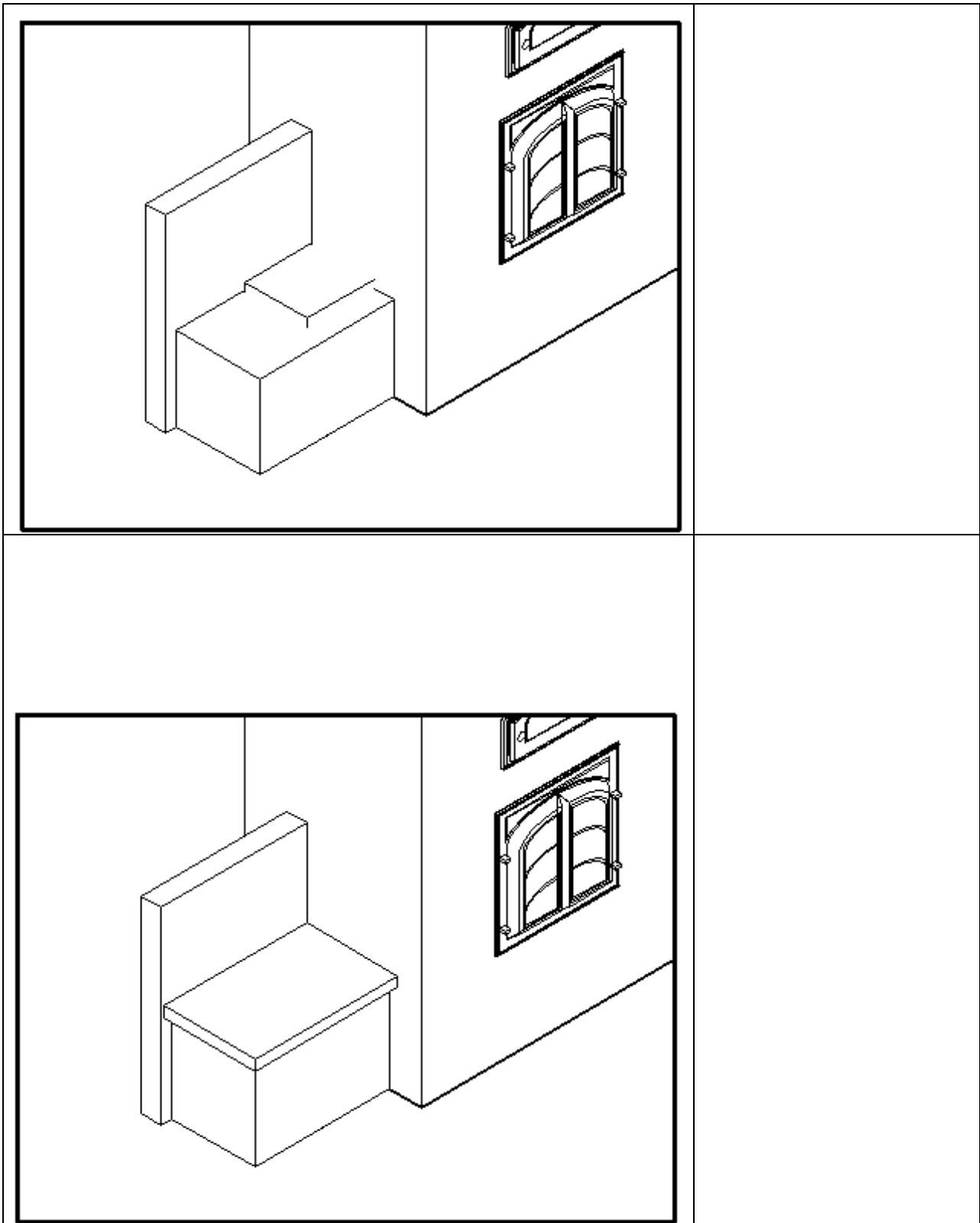
Voice 819.647.5092
Fax 819.647.6082
email mheat@heatkit.com











	<p>As built. Note the bench is dropped 4" from the CAD model because of the insulating base slab</p>
	
	<p>(Not shown). A transition is built near the channel to connect with the opening shown. The bench top is left open, and will be covered with a 2" stone slab, once there is a brick facing around firebrick bench rough-in.</p>