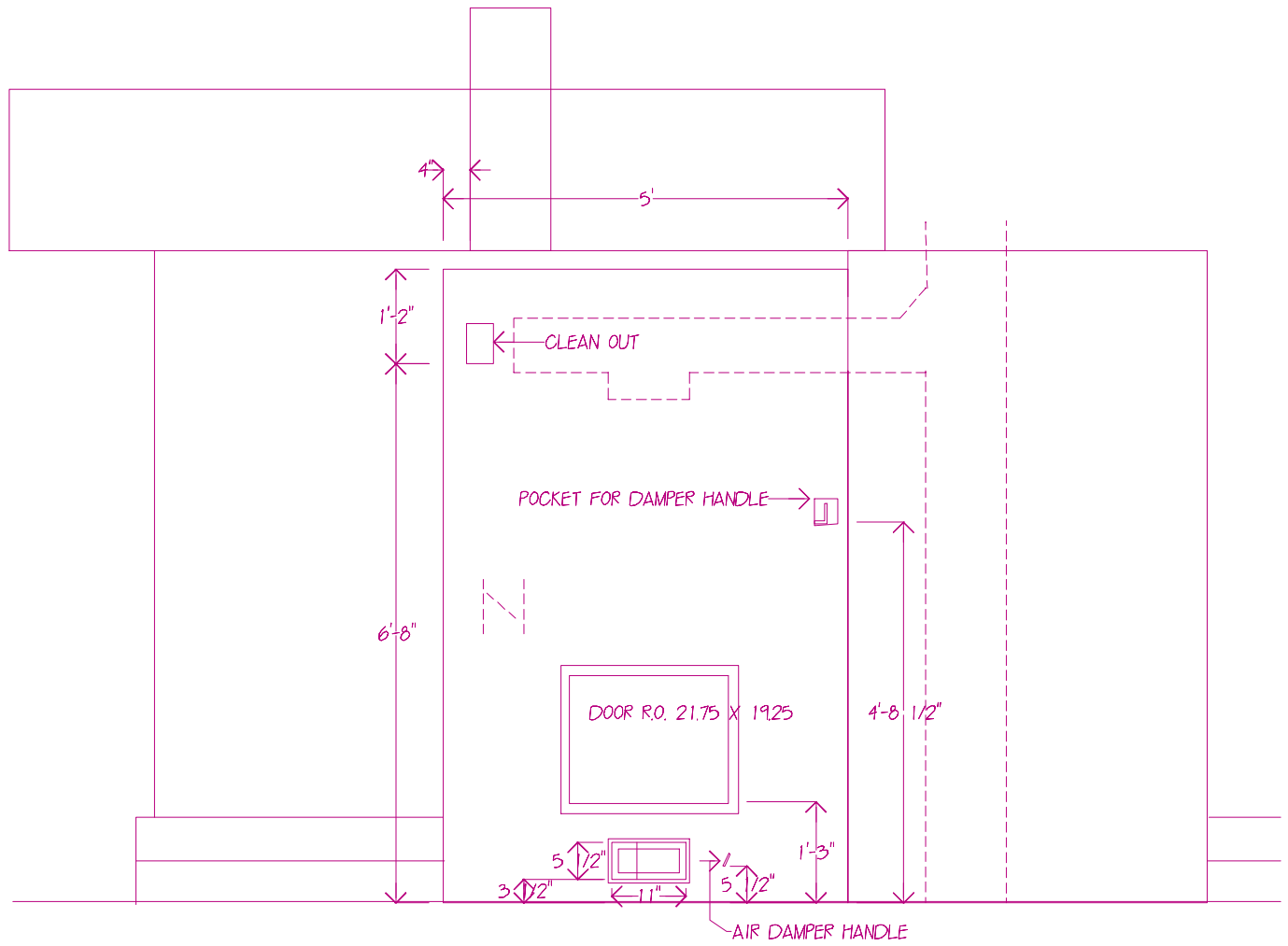


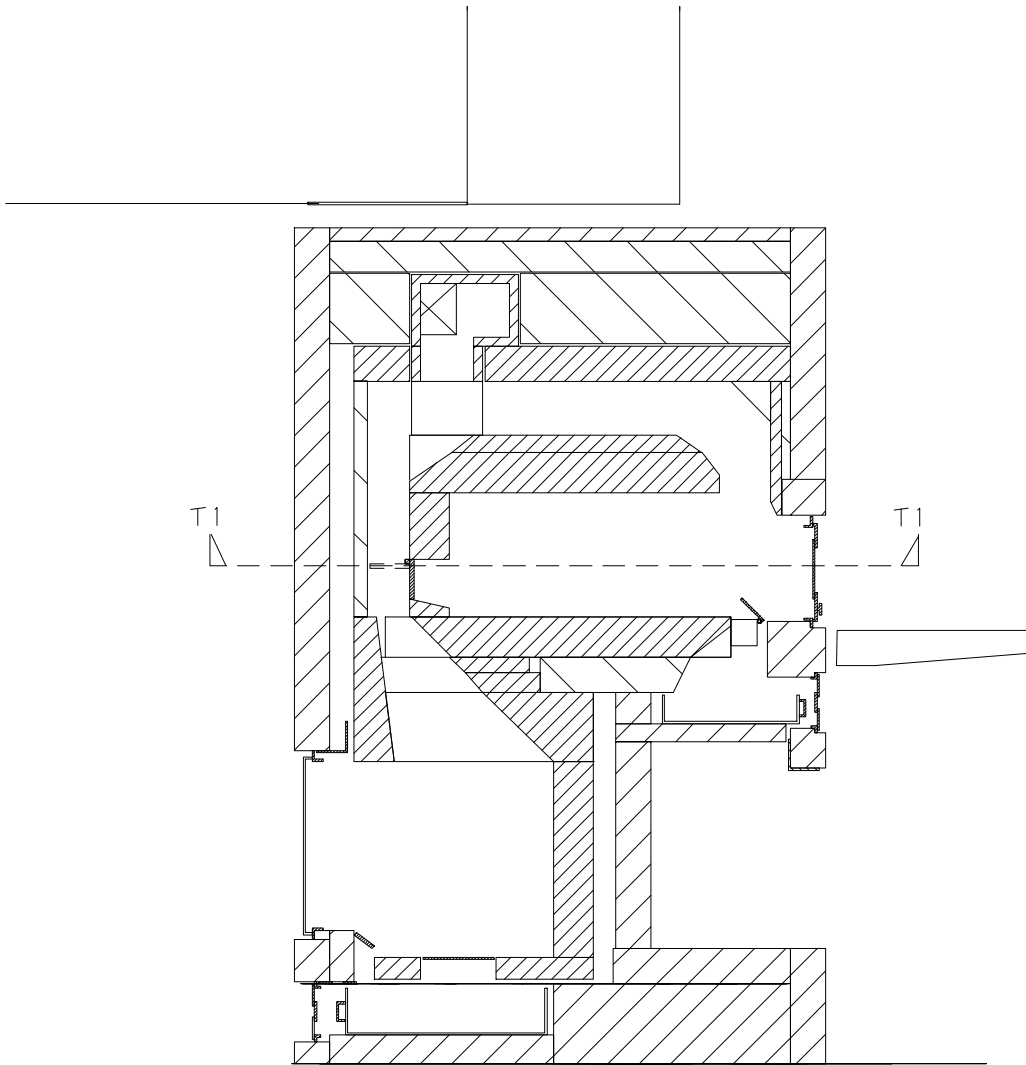
***Beck Bakeoven Assembly***

***Preliminary Nov. 4, 1998***



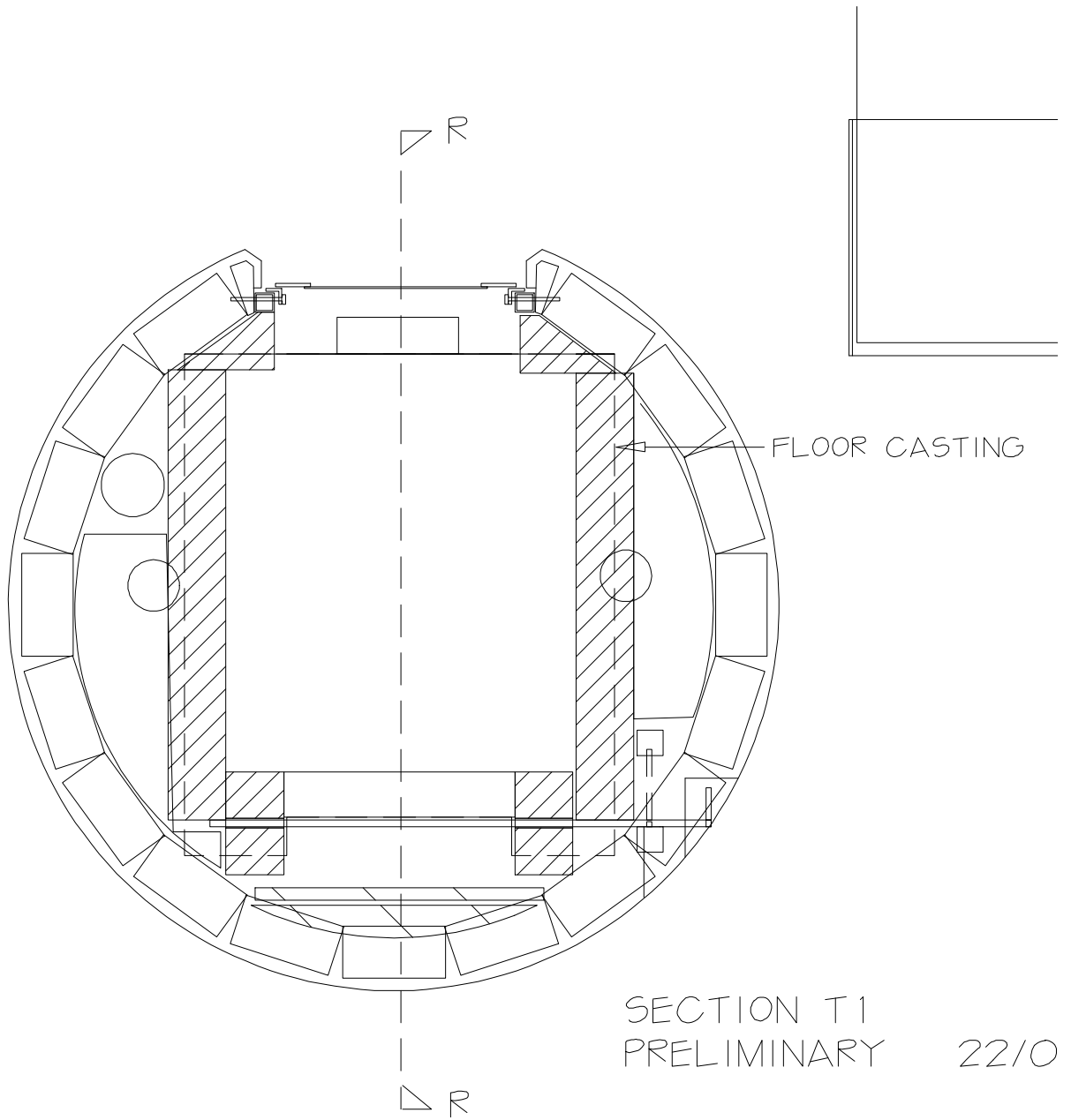
FAMILY ROOM ELEVATION REV. SEPT 06/98

Figure 1

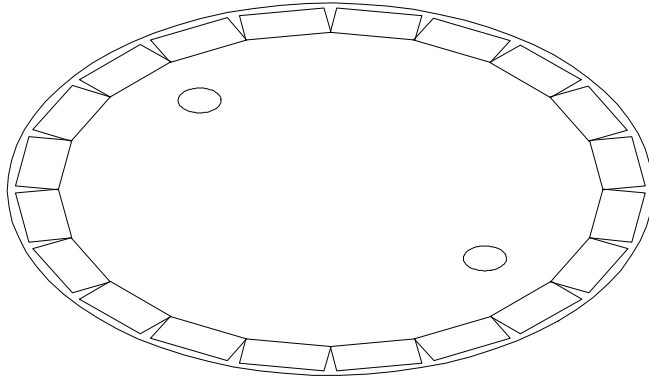


RIGHT SECTION (R) REV. SEP 26/98

Figure 2. Section

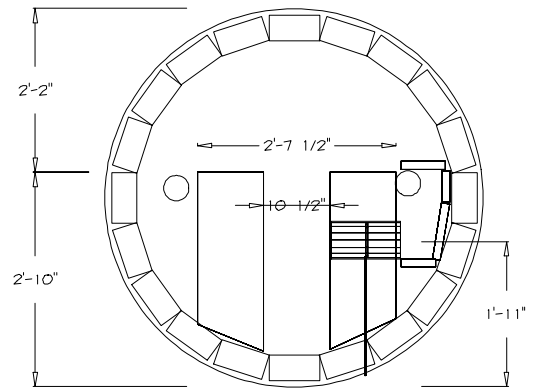


**Figure 3. Section at Oven.**

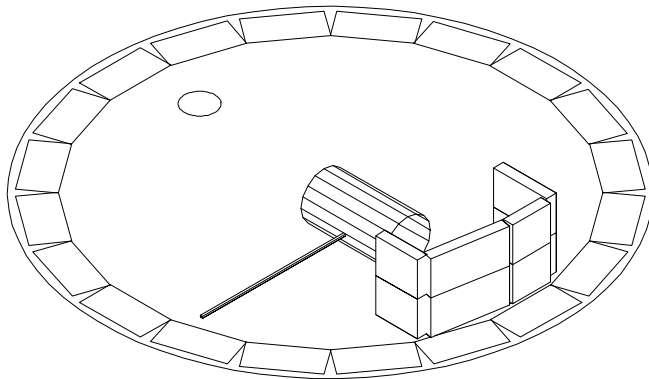


**Figure 4**

Two small circles show existing outside air inlets

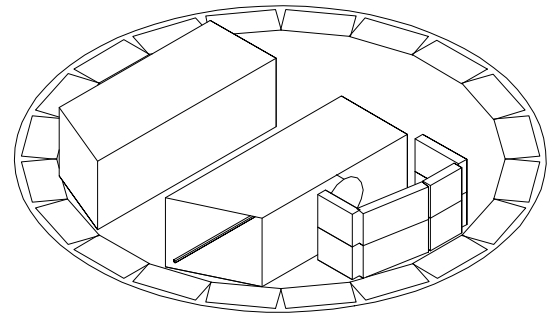


**Figure 5**



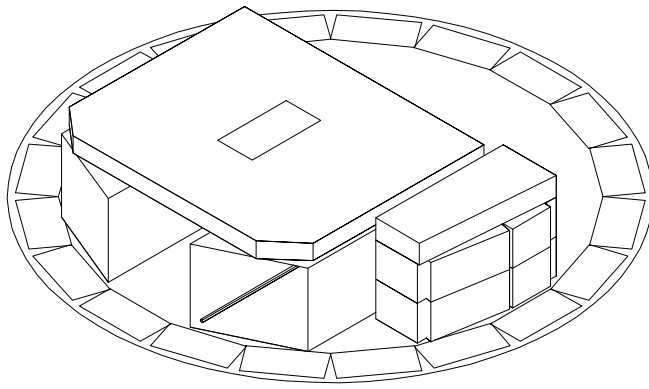
**Figure 6**

Location of fireplace outside air damper. It is built into the fill piece (Figure 7)



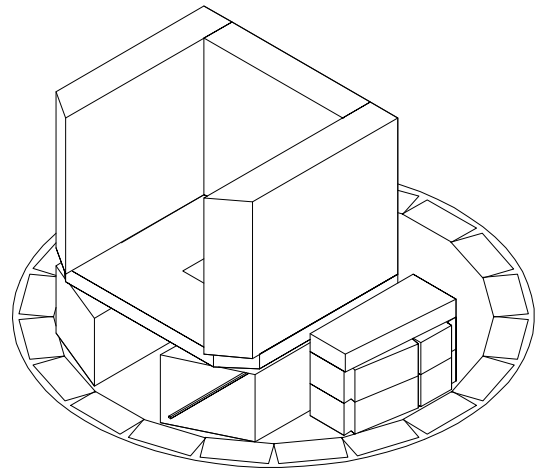
**Figure 7**

Two brick fill pieces to support firebox floor and create ash space. (Note: damper handle is not rendered correctly). Duct for outside air is built from firebrick splits, or equivalent.



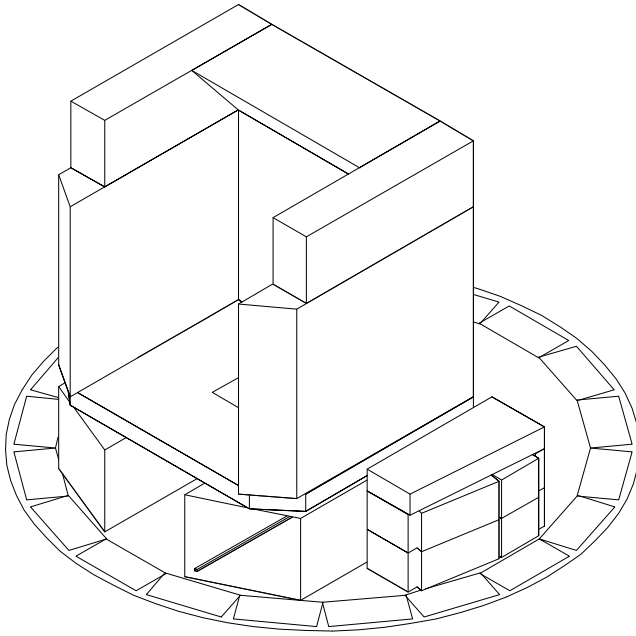
**Figure 8**

Precast firebox floor with ashdump. Firebox floor is 31.5” wide, 26” deep, and 2” thick.

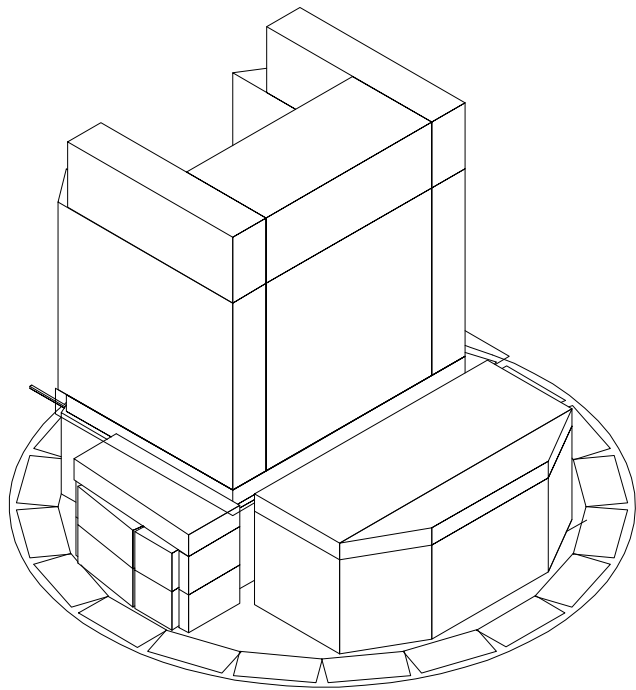


**Figure 9**

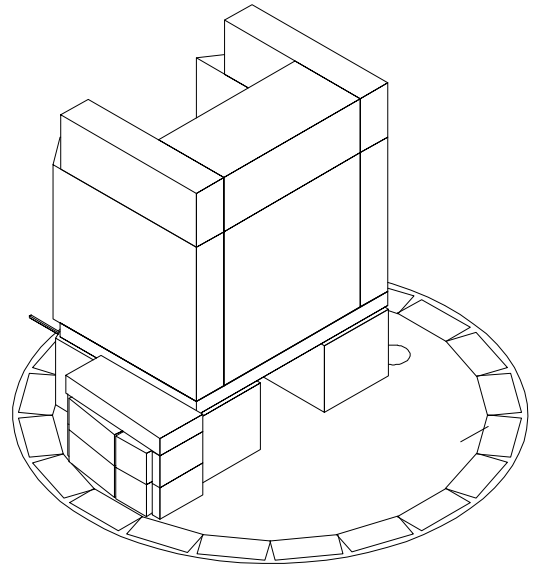
Firebox built from standard firebrick. Firebrick bond is not shown.



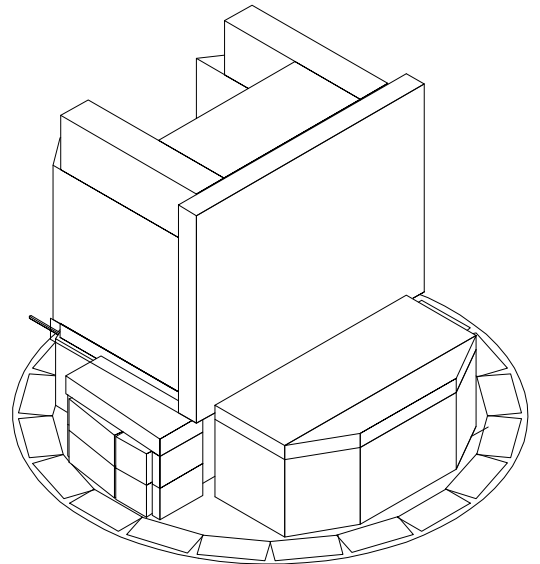
**Figure 10**  
Throat section



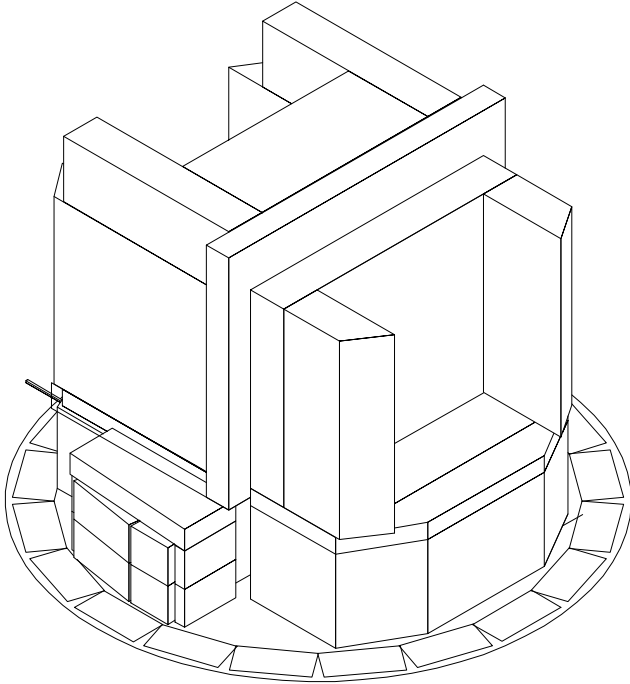
**Figure 12**  
Fill piece to height of wood storage box floor.



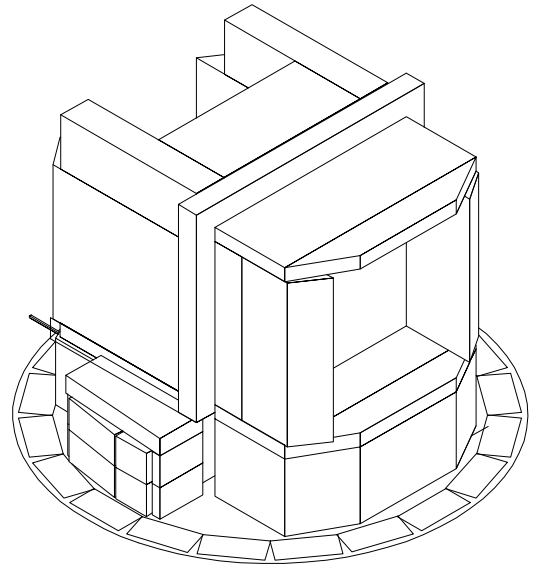
**Figure 11**  
View from kitchen side.



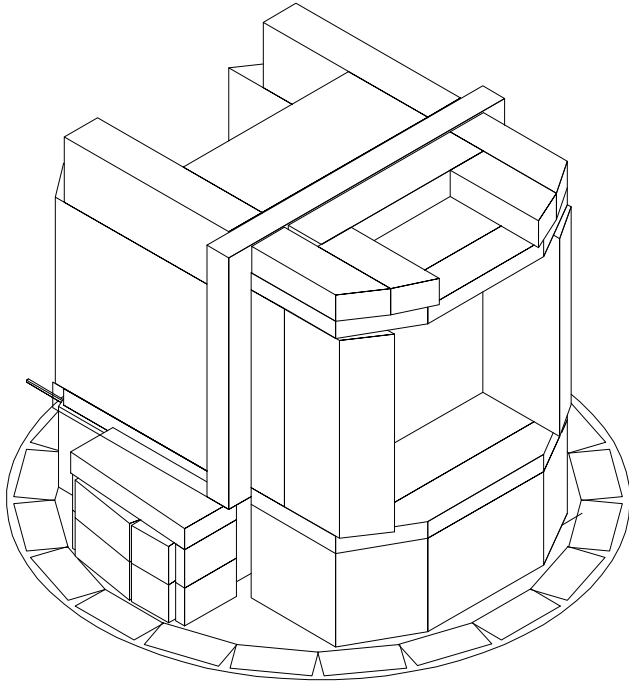
**Figure 13**  
2" of rigid insulating board is added to back of firebox.



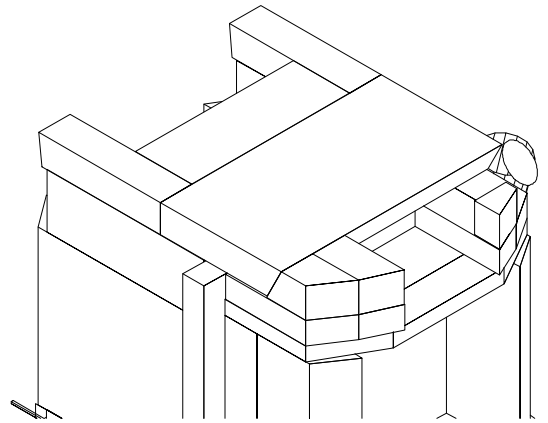
**Figure 14**  
Wood storage box.



**Figure 15**  
Precast ceiling for wood storage box.

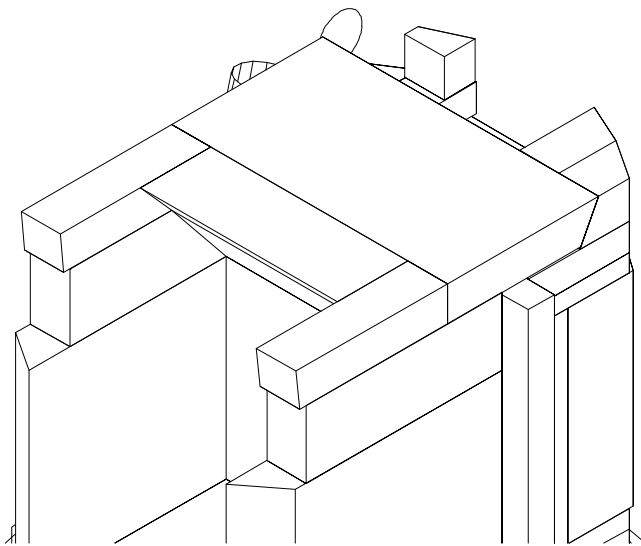


**Figure 16**  
 Bakeoven ashbox is created. Bricks shown are 4.5" wide firebricks or equivalent.

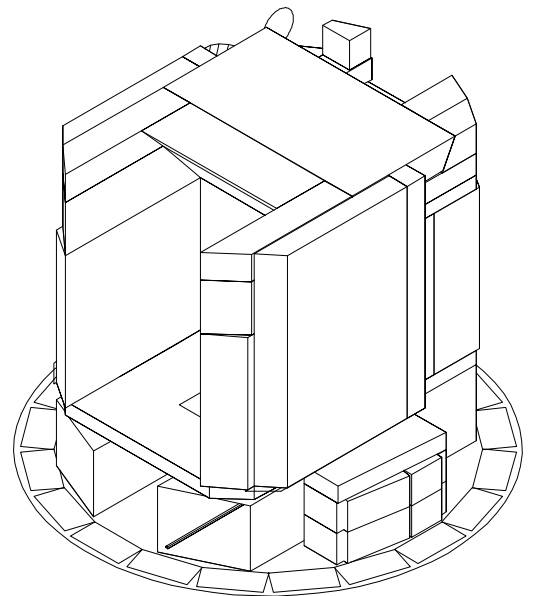


**Figure 17**

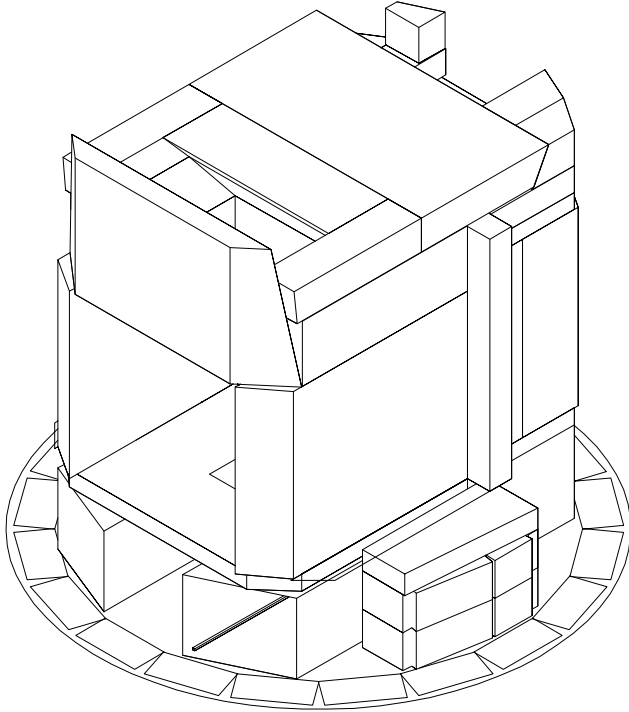
4" of Foamglass is installed. Circle at right shows outside air inlet to bakeoven ashbox



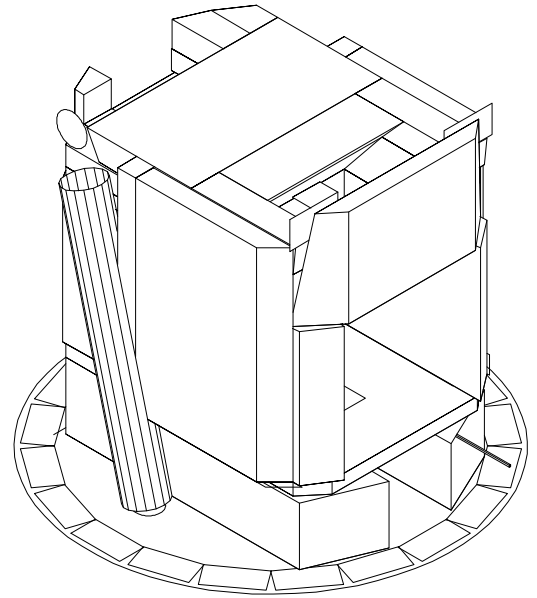
**Figure 18**  
 Same as Figure 17, viewed from family room.



**Figure 19**  
 2" of insulating board is added to the sides of the firebox

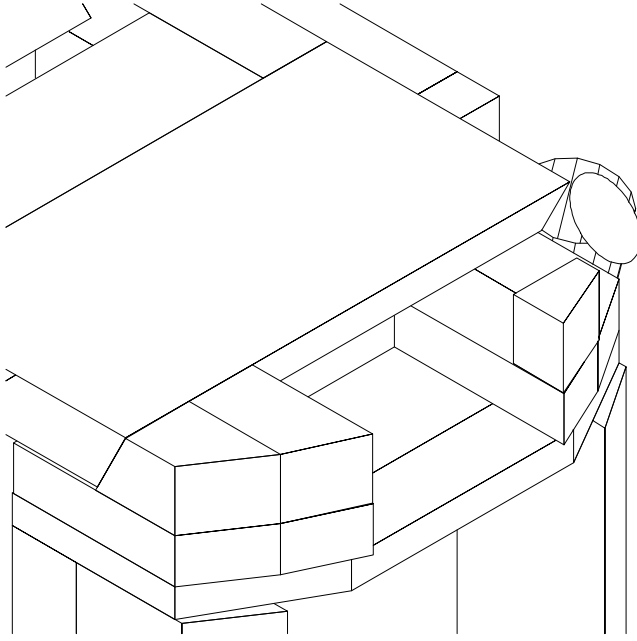


**Figure 20**  
Precast firebox lintel piece is installed

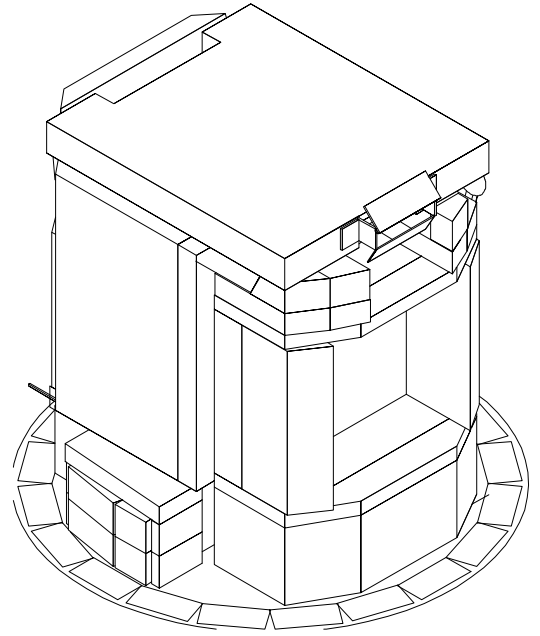


**Figure 21**

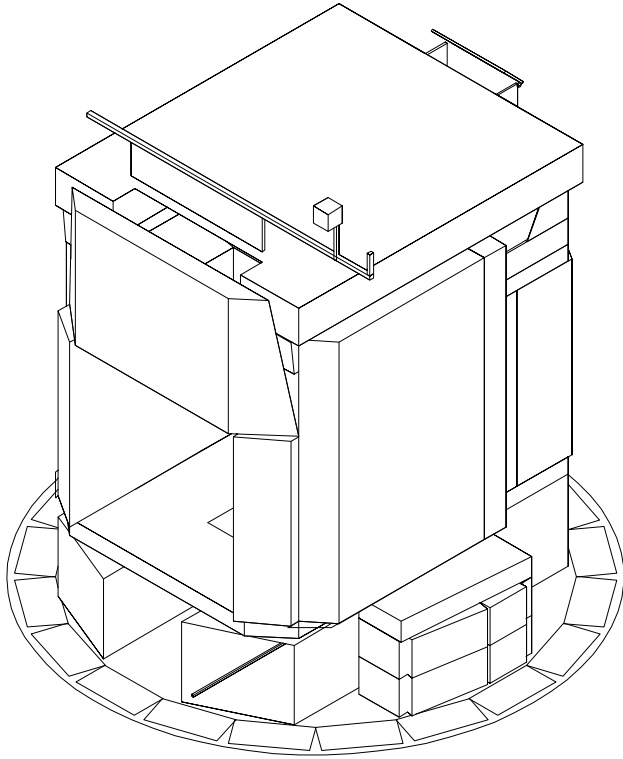
5" insulated flex duct is run from outside air inlet in pad to bakeoven ashbox.



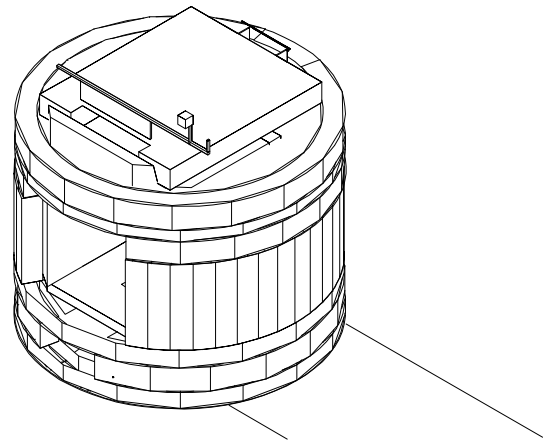
**Figure 22**  
Detail at bakeoven ashbox



**Figure 23**  
Precast oven hearth is installed.



**Figure 24**  
Location of bypass damper is shown



**Figure 25**

Facing is shown. Note: facing is representational only, and is not rendered correctly (ignore faceted appearance)